

Honnenahalli: A Note on a Recently Discovered Cupule site in South Karnataka

Akash Srinivas

Department of Humanities and Social Sciences,
Indian Institute of Science Education and Research,
Mohali – 140306
Email: akashs91@yahoo.co.in

In the fields adjoining the metalled road leading to the *Nuggehalli* temple, off the *Mangalore-Bangalore* Highway (NH 48) near *Honnenahalli*, *Hirisave*, *Hassan* district, southern *Karnataka*, a set of 31 cupules was noticed on an outcrop of granite (12.961° N; 76.549° E; 892m AMSL) (Fig. 1& 2). The fields are currently used as pasture grounds by the migratory pastoralists, who graze their herds of goat and sheep here.

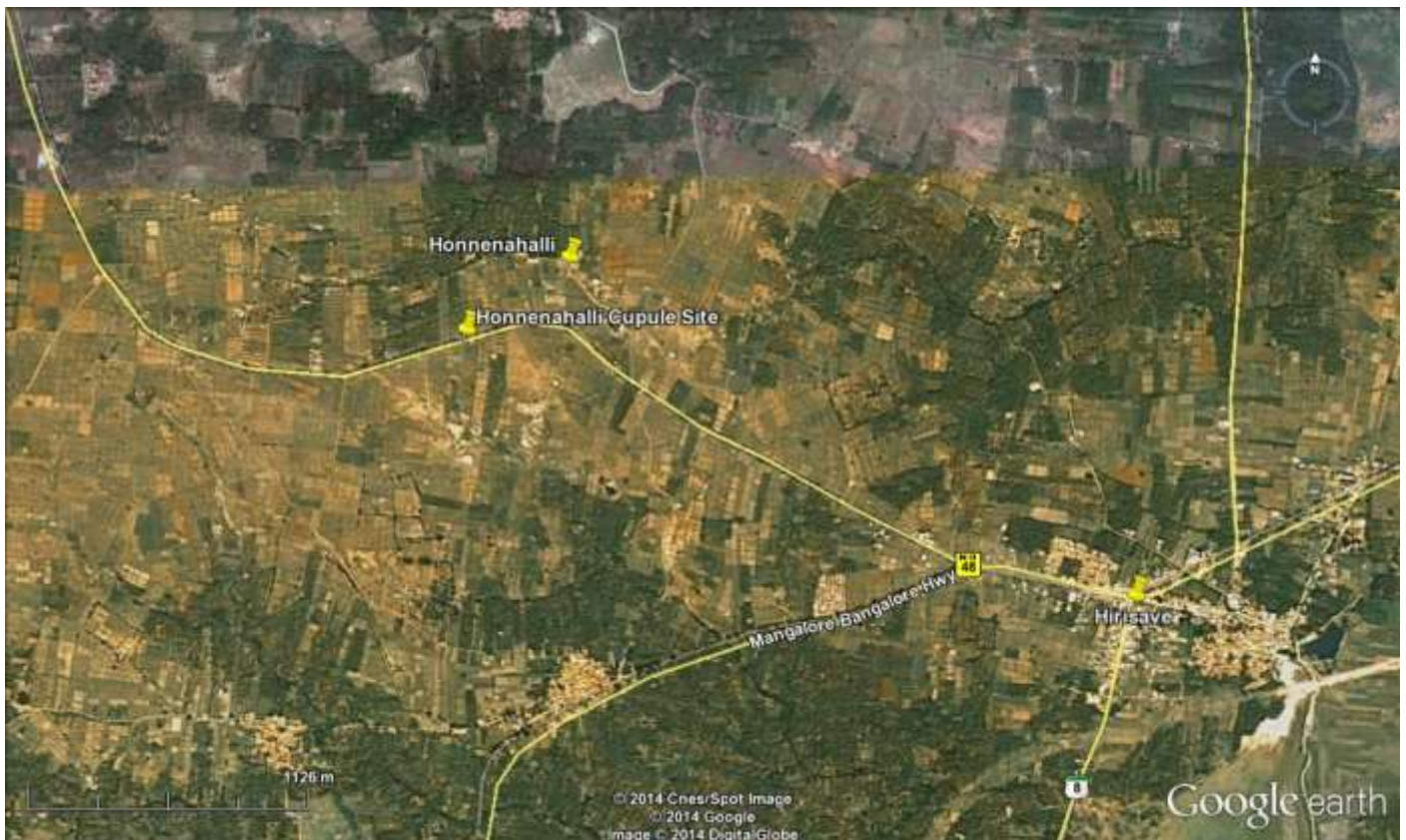


Fig. 1: Location of the Honnenahalli cupule site



Fig. 2: The Honnenahalli cupule site

Four patterns of arrangement of the cupules are noticed. The major pattern is the alignment of 20 cupules, as ten pairs of two cupules, as a parallel line running east-west. To the south of this parallel alignment, is a group of 6 cupules in a random pattern. To the north of the parallel alignment, is a set of 4 cupules, in a single line, running north-south (Fig. 3). One isolated cupule is noticed in the south-east corner of the outcrop. The cupules measure between 6-8cm in diameter. Weathering of the granite outcrop, and its quarrying may have resulted in the loss of other cupules which might have been present here. More detailed investigations in the vicinity of the outcrop, to identify possible cultural material, is necessary before any postulations about this cupule site can be presented, but at present, this granite outcrop is currently marked, most probably for its excavation/quarrying to enable road widening activities, which may result its permanent elimination from the archaeological record.

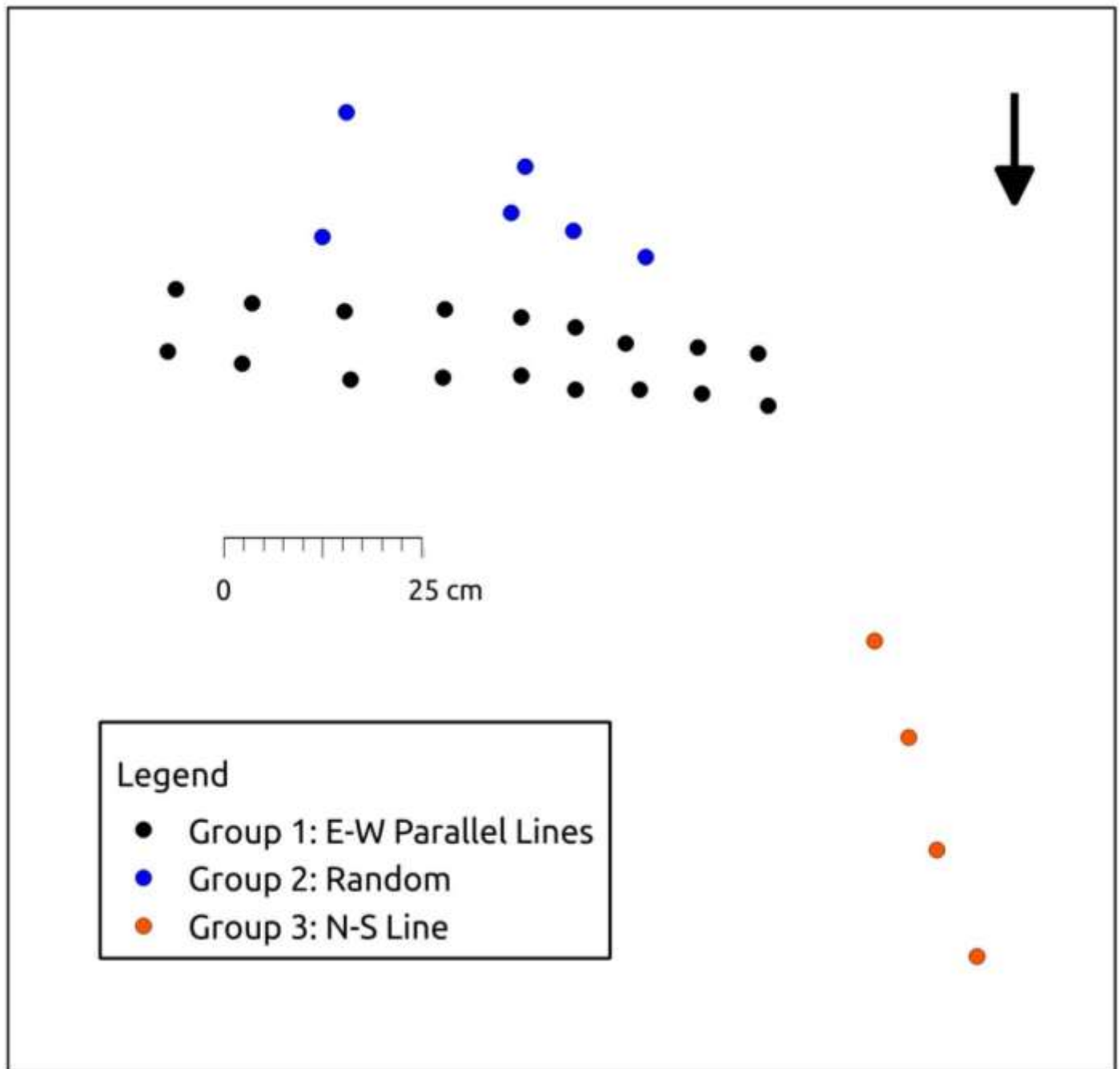


Fig. 3: Plan of the cupules at the Honnenahalli cupule site

Acknowledgements

I would like to thank *Lathashree Kolla*, *Niranjan Chakrabhavi* and *Shri. Ramanuja* for their assistance in the field.